



We Deliver More

Our Services

01



SCRIM® Data Collection

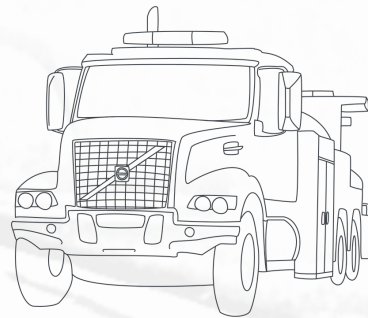
- WDM's SCRIM® is the world's most-used network-level continuous pavement friction measurement device.
- SCRIM® combines GPS-linked continuous pavement friction measurement, macrotexture, roughness (IRI), and geometric (grade, curve, cross-slope) data for a comprehensive understanding of functional pavement performance.
- All SCRIM® vehicles are operated by experienced technicians using accredited, accurate, and repeatable measurement systems, ensuring the delivery of high-quality, accurate, and robust SCRIM® data.
- At the outset of a SCRIM® data collection project or program, WDM USA works with clients to define the data collection strategy, develop a quality control plan, and create a proactive communication plan to provide regular progress updates.
- SCRIM® data is delivered via a hosted platform (SCRIM-SAFE®) or in geospatial and/or tabular formats for direct integration into a client's Enterprise or Pavement Management Systems.

02



Technical Assistance

- WDM USA draws on WDM's 55 years of global experience to help clients integrate SCRIM® data into decision-making.
- As SCRIM® data availability increases, WDM USA is able to offer increasingly sophisticated analyses and accelerate agencies' gains from proactive pavement friction management. From performance summaries to deep learning about the drivers of functional pavement performance, WDM USA helps agencies pinpoint strategies to improve road safety.
- WDM USA's technical assistance builds on a commitment to creating client value, which WDM calls the "Partnership Approach."

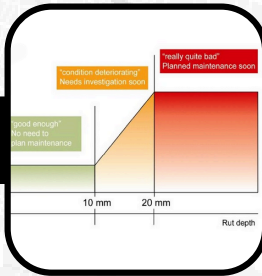


A Note on Partnership

Beyond delivering high-quality, high-value SCRIM® data, WDM USA is committed to working collaboratively with all clients. WDM USA excels in adapting best practices drawn from global experience to local contexts, objectives, constraints, and network characteristics. WDM USA's collaborative approach represents a joint effort towards continuous improvement, driven by transparency, communication, solution-seeking, and innovation.

WDM USA specializes in the following:

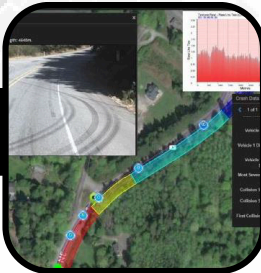
03



Asset Management Support

- Pavement friction and texture demand analysis to inform target and/or threshold values
- Time-based pavement performance/deterioration modeling
- In-service pavement performance characterization, including aggregate sources and surface mix performance
- Systemic and site treatment benefit-cost analysis (BCA)
- Integration of friction and texture data into safety countermeasure/project selection processes and pavement preservation and maintenance decision-trees
- Data-led Pavement Friction Management Policy and Program development
- Transportation Asset Management Plan development

04



Safety Analysis

- Network characterization of the relationship between friction, texture, and crash risk
- At-risk location identification (i.e., low pavement friction/macrotexture, non-conforming road geometry, complex road geometries, such as compound curves)
- Hotspot and corridor analysis
- SPF/CMF development
- Systemic and systematic project identification and prioritization optimized to achieve an organization's safety targets (e.g., a 5% reduction in crashes year-over-year) and budget constraints

Pavement Friction Management Programs...

...help organizations reduce crashes and save money by integrating friction and texture performance data proactively into design, material, maintenance, and safety decision-making, often with benefit-cost ratios (BCRs) in excess of 30:1.